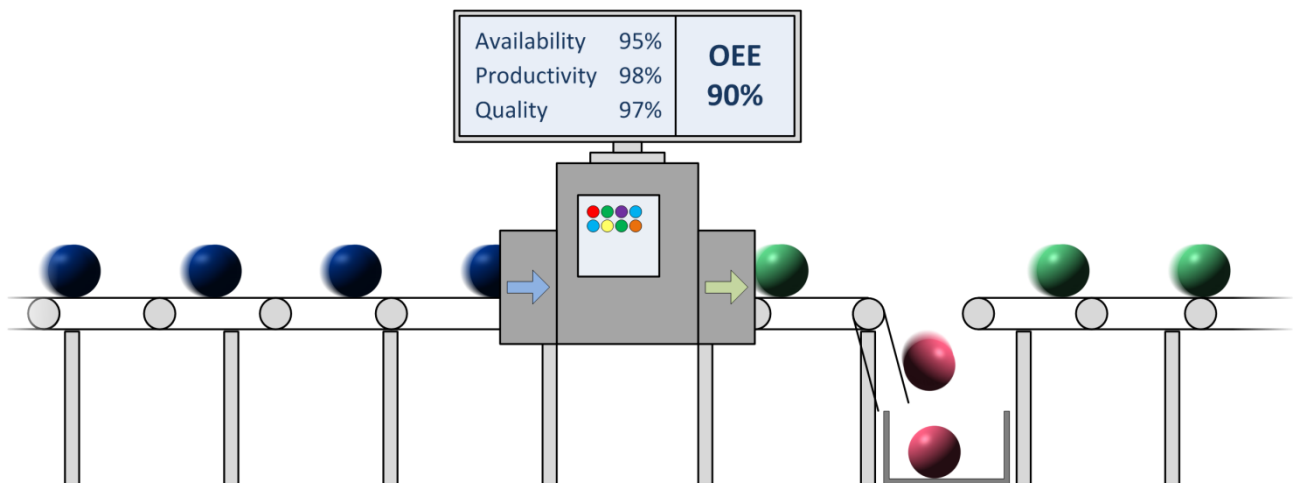




## Version 2.5



## Turn a Sea of Data into Essential Intelligence

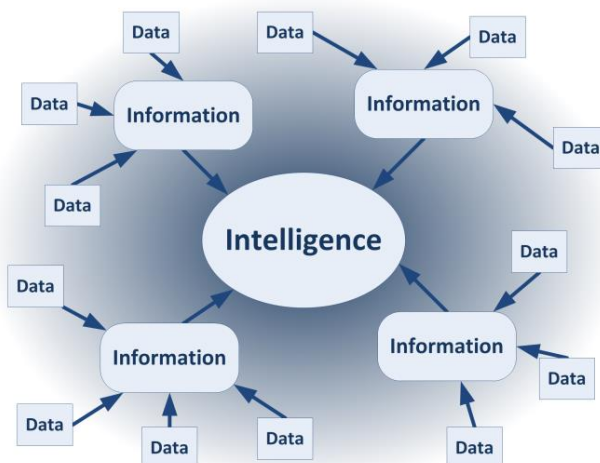
Turn your operations data into vital KPIs, generate decision-guiding reports and carry out critical data analysis with ATS Intelligence.

### Manufacturing Intelligence

Manufacturing Intelligence and the calculation of metrics are playing an ever increasing part in the performance of manufacturing companies.

These days every company can transform collected data into useful information that shows what's happening on a day to day basis.

However, to gain the edge on the competition you must then use that information to generate usable Manufacturing Intelligence that can be relied upon to guide both short-term and long-term strategic decisions.



In the report Manufacturing the Future (©2012, McKinsey Global Institute), McKinsey and Company state:

*"The new era of manufacturing will be marked by highly agile, networked enterprises that use information and analytics as skilfully as they employ talent and machinery to deliver products and services to diverse global markets."*

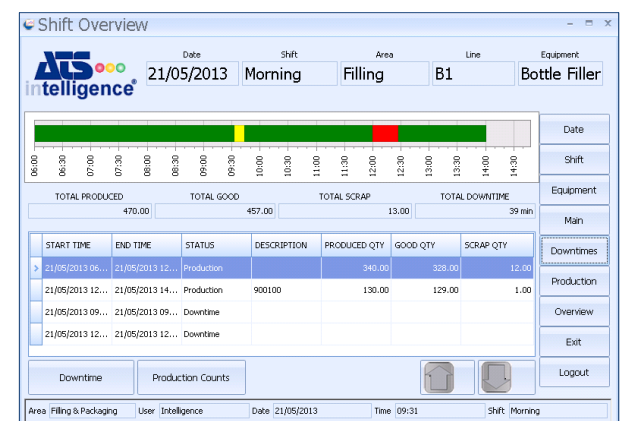
See how **ATS Intelligence** enables you to turn your operations data into one of your most powerful analytical assets.

### Collect Essential Data

**ATS Intelligence** enables you to collect and analyse the following data:

- ▶ The amount of product being manufactured.
- ▶ The machine or process manufacturing the product.
- ▶ The equipment's optimum rate of production.
- ▶ The reasons for downtime for a piece of equipment.
- ▶ Variable data from the equipment.

Up-to-the-minute reports can be generated remotely for all of this data.

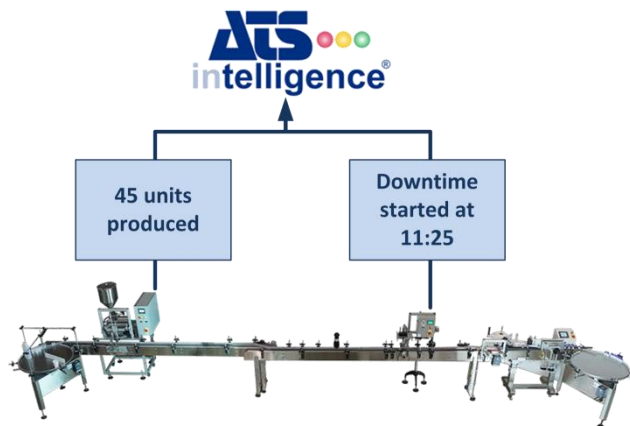


View all your essential operations data in one place

## Automatic Data Collection

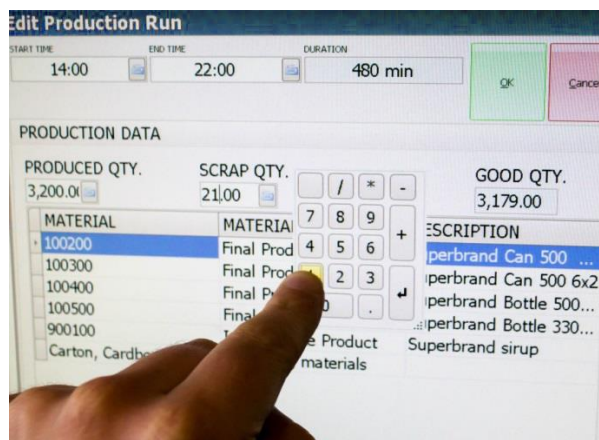
Data can be collected automatically, directly from the production line via OPC and XML files. As you'd expect with any ATS software product you have all the flexibility you need to specify when and how the data is collected.

To give greater visibility of the data being collected **ATS Intelligence** comes with a module that allows you to view the data signals being received via OPC and XML in real-time.



## Manual Data Entry

The simple user interface will allow you to gather data manually at one station from several machines simultaneously. Storing the information in a central database, this paperless method reduces the chances of lost or misinterpreted data.



Data entry can be carried out on a touch screen

Working on networked or standalone devices, you only record the information you need and, in return, you get a quick and clear presentation of the Key Performance Indicators for each piece of equipment and for the whole plant.

## Global Reporting

Using *ATS Reporting Services* all the data can be explored from anywhere on the planet. With secure access to the report website no software is required on the machine on which you view the reports.



This powerful tool will allow you to view the KPIs of everything from an individual machine to an entire plant using fully customizable reports that can be created in-house.

## Realtime Dashboards

For instant data analysis **ATS Intelligence** allows you to design and create dashboards that will display whichever information you need in whatever format you need it.

You can view the latest KPI's, counters and downtimes utilising an array of visual aids such as gauges, bar charts and line charts and tables.

Dashboards give management personnel the information required to make key decisions quickly and effectively.



Dashboards present data quickly and effectively

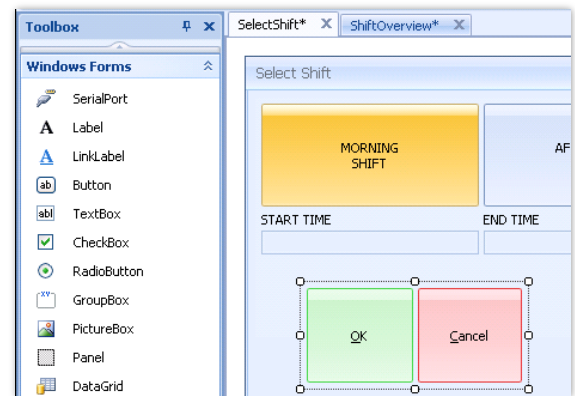
## Work in Multiple Languages

The language displayed at each data collection station is tied to the current user, so that employees who speak different languages can operate efficiently throughout a facility.



## Create Unique Screen Layouts

Different workstations may have different requirements. This could be dependent upon screen size, lighting, or requests from the operators. Operators can have a user interface that's designed perfectly for their workplace.



Create forms to match your exact requirements

## Easy Configuration and Setup

Setting up your system to record production and downtime couldn't be simpler. The detailed documentation will guide you through the configuration process and have you linked up to your production line data in no time.

Once you've entered the details you can quickly get underway recording your operational data in ATS Intelligence.



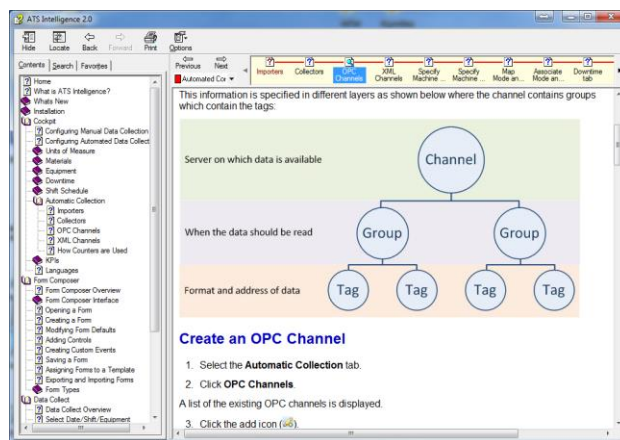
Setup and configuration takes no time



## Minimal Training Requirements

ATS Intelligence focuses on your core goal of collecting and analysing your operational data. Following this principle has allowed us to create a straight forward, intuitive product.

Combine this with user-centred documentation, tutorials, how-to videos and training personalised to your company and you'll be up and running in no time.



Detailed user documentation guides you through

## Part of the ADOS Suite

**ATS Intelligence** is part of the ADOS (Attribute, Dimensional, Operational and Shared) software suite. ADOS gives you world-class data collection, reporting and analysis while its cross-application integration provides endless avenues along which to develop and expand your manufacturing potential.

**ATS** is an **Independent Solution Provider**, with over 25 years' experience in the manufacturing systems arena and a wealth of experience undertaking Continuous Improvement initiatives and Manufacturing IT solution design, deployments and 24/7 support assignments.

[www.ats-global.com](http://www.ats-global.com)